

## Table of Contents

- Introduction
- State of Play
  - Coordination
  - Functioning and coordination of the infrastructure
  - Usage of the infrastructure for spatial information
  - Data Sharing Arrangements
  - Costs and Benefits
- Key Facts and Figures.
  - Monitoring Indicators

## Introduction

The INSPIRE Directive sets the minimum conditions for interoperable sharing and exchange of spatial data across Europe as part of a larger European Interoperability Framework and the e-Government Action Plan that contributes to the Digital Single Market Agenda. Article 21 of [INSPIRE Directive](#) defines the basic principles for monitoring and reporting. More detailed implementing rules regarding INSPIRE monitoring and reporting have been adopted as [Commission Implementing Decision \(EU\) 2019/1372](#) on the 19th August 2019.

This country fiche highlights the progress in the various areas of INSPIRE implementation. It includes information on [monitoring 2021](#) acquired in December 2021 and Member States update.

## State Of Play

A high-level view on the governance, use and impact of the INSPIRE Directive in Romania. More detailed information is available on the [INSPIRE knowledge base](#).

### Coordination

#### National Contact Point

**Name of Public Authority:** National Agency for Cadastre and Land Registration

**Postal Address:** No. 202A Splaiul Independenței, 1st floor, sector 6, Bucharest

**Contact Email:** [Click to email](#)

**Telephone Number:** +40 21 317 73 39

**Telefax Number:** +40 21 316 52 24

**National INSPIRE Website:** <http://www.ancpi.ro>

**MIG Contacts: Contact Person:** Marilena Daniela Doncuta

**Email:** marilena.doncuta@mmediu.ro

**Contact Person:** Ioan - Laurentiu Raileanu

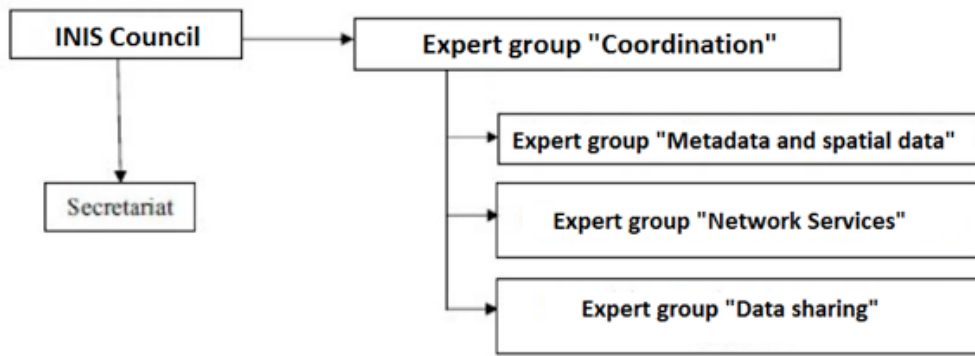
**Email:** ioan.raileanu@ancpi.ro

**MIG T Contacts: Contact Person:** Gabriela Magearu

**Email:** gabriela.magearu@ancpi.ro

**Contact Person:** Gabriela Dragan

**Email:** gabriela.dragan@ancpi.ro



### Coordination Structure & Progress:

- The normative act transposing the INSPIRE Directive, the Government Ordinance nr. 4/2010 on the establishment of the National Infrastructure for Spatial Information in Romania was republished in 2014. It establishes the legal framework for the setting up of the National Infrastructure for Spatial Information Council (INIS Council), which has a coordinating role in the implementation of the INSPIRE Directive and consists of representatives of 21 public authorities.
- The Presidency and Secretariat of the INIS Council are provided by the National Agency for Cadastre and Land Registration (ANCP), while the Vice-President is provided by the Ministry of Environment, Water and Forests. As shown above, the INIS Council is assisted in its work by 4 expert groups.
- The information contained by this document relates to the period January 2021 – March 2022.
- The reporting period is extended, because at the monitoring date (December 16, 2021), the INIS geoportal faced technical problems, as it has been reported in the email sent to JRC support team, on December 15, 2021. After solving all technical problems, it was made a new collection, which has been published in the INSPIRE geoportal on March 4, 2022. The network services that now appear in the INSPIRE geoportal had been performed on the monitoring date (December 16, 2021), but could not be collected.
- The expert groups continued their specific work to support public authorities in the implementation of INSPIRE.
  - On the INIS geoportal of Romania, <http://geoportal.gov.ro/arcgis/apps/sites/#/inspire/>, it is available information about the National Infrastructure for Spatial Information in Romania, which is providing to the users access to the public and private environment.

### Functioning and coordination of the infrastructure

- The geoportal of the Ministry of National Defense can be accessed at: <https://portal.geomil.ro/portal/home/>, where can be found information about INSPIRE services within the themes I.3 Geographical names, II.1 Elevation and II.3 Orthoimagery.
- The RO-RISK portal ensures the access of all interested parties to the data regarding those elements exposed to risks and/or vulnerable, hazard and risk maps at The Romanian level
- Spatial data in the field of geology can be accessed through the geo-portal of the Geological Institute of Romania <http://geoportal.igr.ro>.
- At the web address <https://gis.cestrin.ro/arcgis/home/> has been developed the spatial data portal, which is necessary for the publication of the view and download services, access to these services is requiring authentication.
- Through the geo-portal of the National Meteorological Agency, <https://inspire.meteoromania.ro> one can access the visualization and download services for the data in the themes III.7 Environmental monitoring facilities, III.13 Atmospheric conditions and III.14 Meteorological Geographical features.
- The spatial data on hydrography are published on the GIS portal of the Romanian Waters National Administration, <https://portal-gis.rowater.ro/portal/home/> where can be found the hazard and flood risk map application, which contains spatial data for theme III.12. Natural risk areas.
- The railway transport networks can be accessed on the geoportal <https://inspire.infofer.ro/>
- The has been created the geoportal of the Agency for Payments and Intervention in Agriculture (APIA) [https://inspire.apia.org.ro/metadata\\_manager/#searchPanel](https://inspire.apia.org.ro/metadata_manager/#searchPanel), where can be discovered the metadata of the spatial data sets and services made by APIA.
- The geoportal of the National Institute of Public Health <https://inspire.insp.gov.ro/geoportal/#searchPanel>, was federated with the INIS geoportal and the data related to the topic III.5 Human health and safety can be accessed through the compliant view and download services.
- Statistical data from themes III.1 Statistical units and III.10 Population distribution – demography can be accessed through the geoportal of the National Institute of Statistics <https://inspire.insse.ro/geoportal/#searchPanel>
- The INIS geo-portal has been updated and there have been added new capabilities to make it easier to be accessed access. There have been updated applications for viewing and downloading spatial open datasets in national format. The geoportal web applications are federated with the INIS geoportal of Romania, so all the spatial data can be discovered in the INIS geoportal and, implicitly, in the INSPIRE geoportal of the EC.
- It has been developed an application to transform INSPIRE metadata version 1.3 to version 2.0.
- Download services that can be accessed restricted are not available in the INSPIRE geo-portal.

- Compared to the previous year, improvements were observed in data sharing and data/service compliance. This is also due to the fact that the spatial data infrastructure is constantly being updated.
- There has been an increase in viewing and downloading services compared to 2021, as seen in the INSPIRE geoportal. INSPIRE services have been developed for themes II.3 Orthoimagery and III.6 Utility and governmental services and visualization services for theme III.4. Land use with data from LPIS.

#### Usage of the infrastructure for spatial information

- All public authorities in Romania download from the INIS geo-portal, the INSPIRE dataset related to the theme I.4 "Administrative Units", based on an open data license.
- Spatial datasets within themes II.1 Elevation and II.3 Orthoimagery can be made available to public authorities based on collaboration and data exchange protocols.
- Spatial data in national format, within the Download applications on the INIS geoportal is declared Open Data and is provided on the basis of licenses. The use of INIS allows to obtain a clear picture of the available data and services, and to identify gaps in order to ensure a complete space infrastructure.
- As to avoid overlaps of spatial data public procurement and multiplication of expenditures for collecting spatial data, it has been created the *National Projects application*, on the INIS geoportal which aims to record projects producing publicly funded spatial data, by loading the project coverage, followed by completion of project information.
- The spatial dataset theme III.12 Natural risk zones was used by local public authorities, the National Institute of Statistics and also in emergency situations.

#### Data sharing arrangements

- The public authorities in Romania conclude collaboration protocols to share the spatial data they hold. Not only the INSPIRE data, but also the spatial data that make up the national infrastructure in Romania are included in these arrangements.
- INIS provides a uniform framework for the pooling of data and public access to it.

#### Costs and benefits

- ANCPPI continued to carry out the framework contract concluded at the end of 2018 for a period of 4 years for the realization of view and download services for the data sets related to *the topics Addresses, Buildings and Utility and governmental services*.
- The costs of implementing and maintaining the MADR-APIA geoportal, including staff training, were 680,544 lei without VAT.
- AIGA has costs associated with maintaining the functioning of the INIS component amounting to approximately 35,000 euros per year.
- The INIS geoportal facilitates the discovery of data, for which development have been used common standards to enable interoperability between public authorities and Member States, as well as the sharing and re-use of data using a common infrastructure.

## Key facts and figures

# Romania

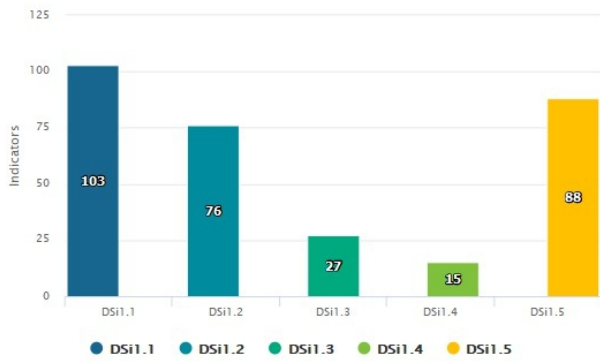
Indicators in support of [Commission Decision \(EU\) 2019/1372](#) implementing Directive 2007/2/EC (INSPIRE) as regards to monitoring and reporting

Graphs generated with data taken from: [https://inspire-geoportal.ec.europa.eu/mr2021\\_details.html?country=ro](https://inspire-geoportal.ec.europa.eu/mr2021_details.html?country=ro)

The date of harvest metadata: 16/12/2021

Endpoint: *INSPIRE-7edbed58-ddbc-11e4-b469-52540004b857*

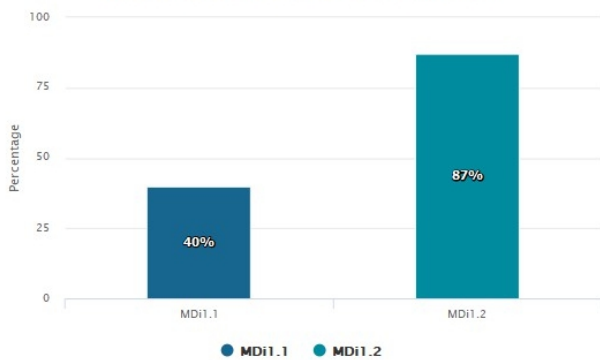
### Monitoring of the availability of spatial data and service



### Legend

Indicator	Definition
DSi1.1	The number of spatial data sets for which metadata exist
DSi1.2	The number of spatial data services for which metadata exist
DSi1.3	The number of spatial data sets for which the metadata contains one or more keywords from a register provided by the Commission indicating that the spatial data set is used for reporting under the environmental legislation
DSi1.4	The number of spatial data sets for which the metadata contains a keyword from a register provided by the Commission indicating that the spatial data set covers regional territory
DSi1.5	The number of spatial data sets for which the metadata contains a keyword from a register provided by the Commission indicating that the spatial data set covers national territory

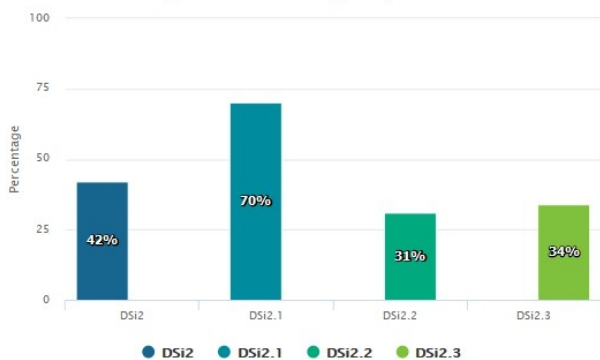
### Monitoring of the conformity of metadata



### Legend

Indicator	Definition
MDi1.1	Percentage of metadata for spatial data sets conformant with Commission Regulation (EC) No 1205/2008 as regards metadata
MDi1.2	Percentage of metadata for spatial data services conformant with Commission Regulation (EC) No 1205/2008 as regards metadata

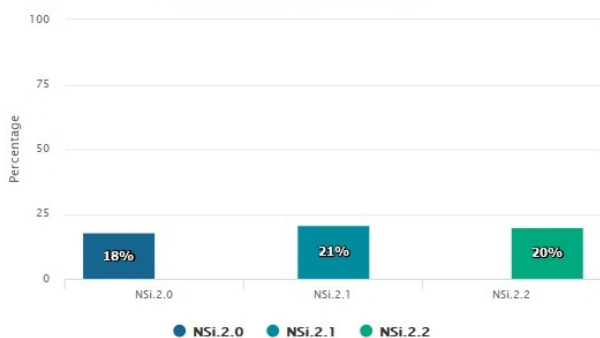
### Monitoring of the conformity of spatial data sets



### Legend

Indicator	Definition
DSi2	Percentage of spatial data sets that are in conformity with Commission Regulation (EU) No 1089/2010 as regards interoperability of spatial data sets
DSi2.1	Percentage of spatial data sets, corresponding to the themes listed in Annex I, that are in conformity with Commission Regulation (EU) No 1089/2010 as regards interoperability of spatial data sets
DSi2.2	Percentage of spatial data sets, corresponding to the themes listed in Annex II, that are in conformity with Commission Regulation (EU) No 1089/2010 as regards interoperability of spatial data sets
DSi2.3	Percentage of spatial data sets, corresponding to the themes listed in Annex III, that are in conformity with Commission Regulation (EU) No 1089/2010 as regards interoperability of spatial data sets

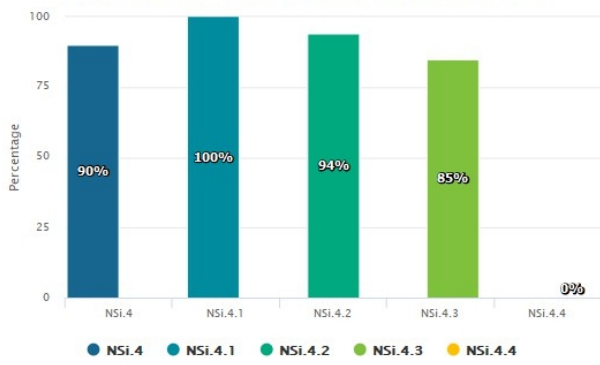
### Monitoring of the accessibility of spatial data sets through view and download services



### Legend

Indicator	Definition
NSi.2.0	The Percentage of spatial data sets that are accessible through view and the download services
NSi.2.1	The Percentage of spatial data sets that are accessible through view services
NSi.2.2	The Percentage of spatial data sets that are accessible through download services

### Monitoring of the conformity of the network services



### Legend

Indicator	Definition
● NSi.4	Percentage of the network services that are in conformity with Commission Regulation (EC) No 976/2009 as regards the Network Services
● NSi.4.1	Percentage of the discovery services that are in conformity with Commission Regulation (EC) No 976/2009 as regards the Network Services
● NSi.4.2	Percentage of the view services that are in conformity with Commission Regulation (EC) No 976/2009 as regards the Network Services
● NSi.4.3	Percentage of the download services that are in conformity with Commission Regulation (EC) No 976/2009 as regards the Network Services
● NSi.4.4	Percentage of the transformation services that are in conformity with Commission Regulation (EC) No 976/2009 as regards the Network Services