

Table of Contents

- Introduction
- State of Play
 - Coordination
 - Functioning and coordination of the infrastructure
 - Usage of the infrastructure for spatial information
 - Data Sharing Arrangements
 - Costs and Benefits
- Key Facts and Figures.
 - Monitoring Indicators

Introduction

The INSPIRE Directive sets the minimum conditions for interoperable sharing and exchange of spatial data across Europe as part of a larger European Interoperability Framework and the e-Government Action Plan that contributes to the Digital Single Market Agenda. Article 21 of [INSPIRE Directive](#) defines the basic principles for monitoring and reporting. More detailed implementing rules regarding INSPIRE monitoring and reporting have been adopted as [Commission Implementing Decision \(EU\) 2019/1372](#) on the 19th August 2019.

This country fiche highlights the progress in the various areas of INSPIRE implementation. It includes information on [monitoring 2022](#) acquired in December 2022 and Member States update.

State Of Play

A high-level view on the governance, use and impact of the INSPIRE Directive in Slovenia. More detailed information is available on the [INSPIRE knowledge base](#).

Coordination

National Contact Point

Name of Public Authority: Surveying and Mapping Authority

Postal Address: Zemljemerska ulica 12

SI - 1000 Ljubljana

Contact Email: [Click to email](#)

Telephone Number: 00386 1 478 4800

National INSPIRE Website: <http://www.geoportal.gov.si/eng/>

MIG Contacts: Contact Person: Uroš Mladenović

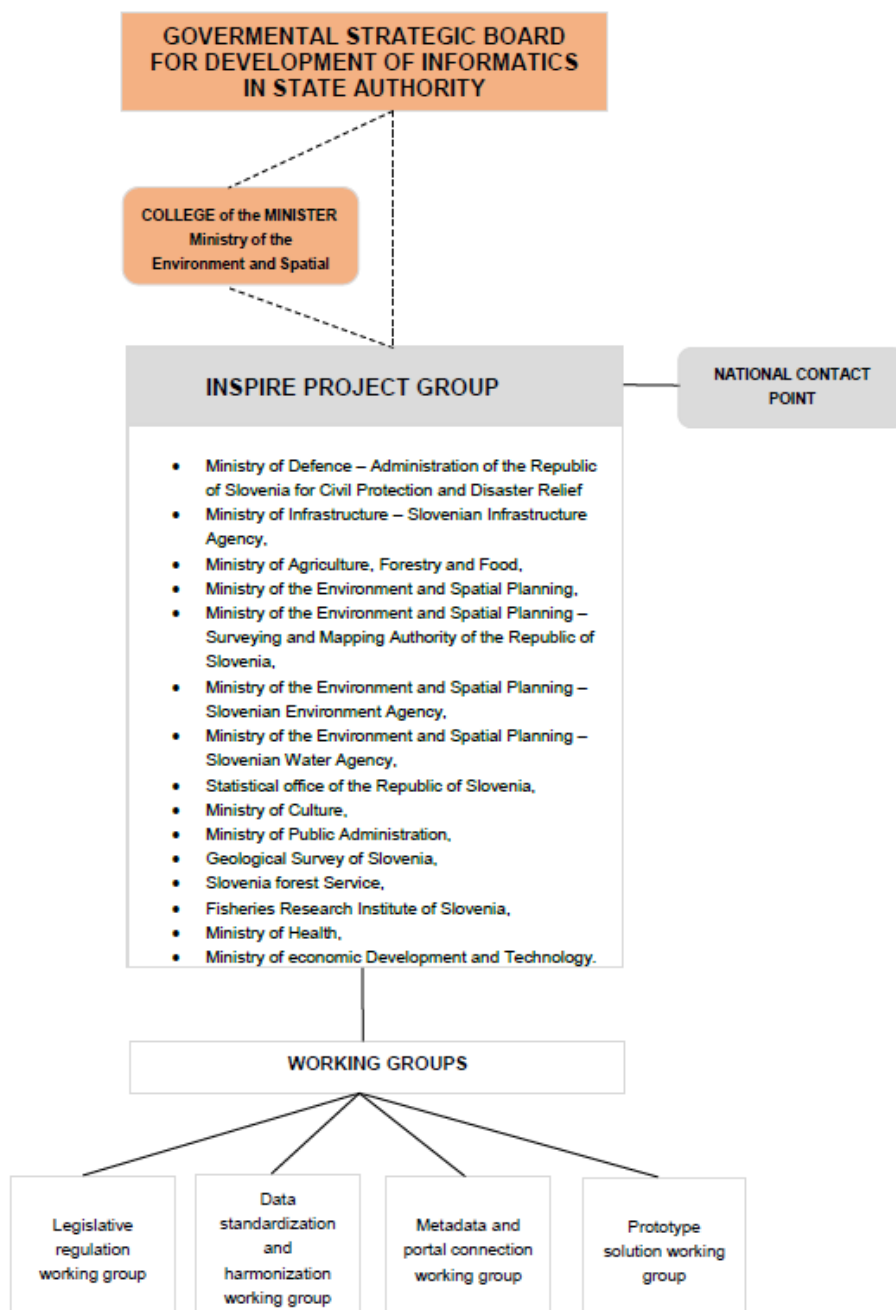
Email: uros.mladenovic@gov.si

Telephone Number: 00386 1 478 4870

MIG T Contacts: Contact Person: Matej Sotlar

Email: matej.sotlar@gov.si

Telephone Number: 00386 1 478 4833



Coordination Structure & Progress:

- The annual Slovenian INSPIRE days were organised every year from 2016 to 2022.
 - Several workshops about different INSPIRE related topics for data and services providers and other stakeholders were organised in Slovenia.

Functioning and coordination of the infrastructure

- Information available through Slovenian INSPIRE geoportal <http://www.geoportal.gov.si/>. The portal was renewed in 2018.
- Inclusion of INSPIRE to the broader strategy for managing spatial data and administration processes – eSpatial.
- The principles of the INSPIRE Directive have become an integral part of national strategies for managing spatial data, their use and linking with other national data.
- Slovenian metadata profile was established and [published](#). The profile is extended INSPIRE metadata profile.
- Key instructions, recommendations and technical guidelines were translated. Additionally strategic documents were prepared along with education program, which are accessible on the Slovenian INSPIRE geoportal.
- INSPIRE web services are open and freely accessible. In 2021 we added INSPIRE compliant ATOM Feed services.

Usage of the infrastructure for spatial information

- The public use of spatial data services and spatial data themselves has increased in 2016-2022 as the result of free access to web services, the use is steadily increasing

- INSPIRE metadata are regularly harvested to national open data portal.
- A practical example of cross-border cooperation was being carried in the scope of harmonisation of spatial data on the border with Italy (project HARMO-DATA).
- Standardised location data is used for most digital public services in domains such as environment, marine, transport, energy, property/land administrations, spatial planning, smart cities, health, culture, education, utility, tax policy...

Data sharing arrangements

- National interoperability framework – NIO is operating as a tool to ease the cooperation inside public administration
- In the time period 2016-2022 no practical examples of performed data sharing agreements between public authorities and European Union institutions and bodies were recorded
- Public Information Access Act has been slightly changed on 8 May 2016 according to the Directive on the re-use of public sector information
- All location data is available free of charge under an open licence without restrictions.

Costs and benefits

- The transparency and opening of data stimulates the efficiency in the public sector and help with the broadening of digital economy and business development.
- Monitoring the advantages and benefits is not systematically regulated.

Key facts and figures

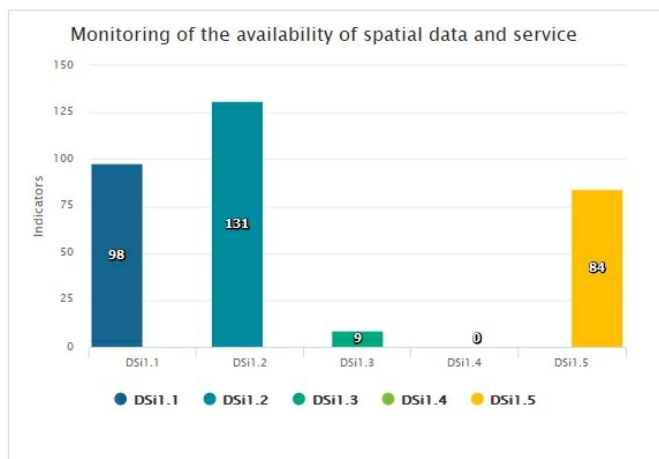
Slovenia

Indicators in support of [Commission Decision \(EU\) 2019/1372](#) implementing Directive 2007/2/EC (INSPIRE) as regards to monitoring and reporting

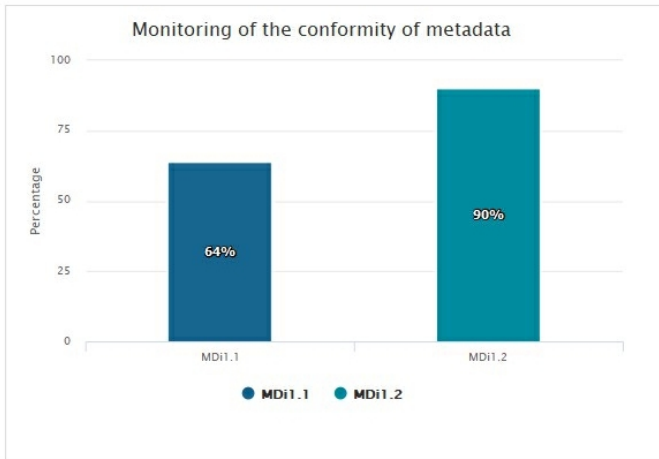
Graphs generated with data taken from: https://inspire-geoportal.ec.europa.eu/mr2022_details.html?country=si

The date of harvest metadata: 2022-12-16, 21:09:48

Endpoint: 7ca98445-49f7-4e1a-9365-627650113b6d

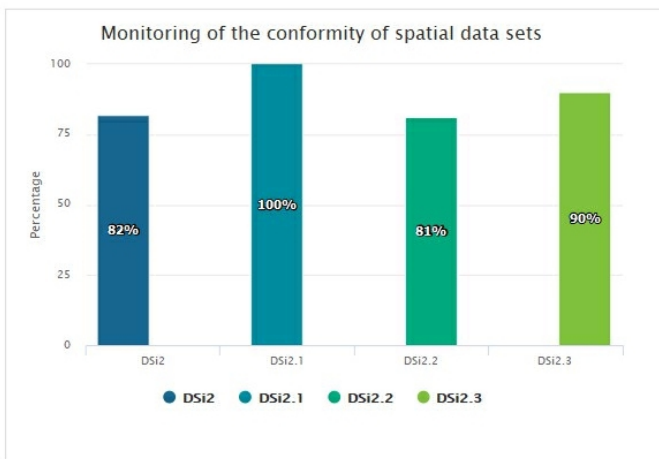


Legend	
Indicator	Definition
● DSi1.1	The number of spatial data sets for which metadata exist
● DSi1.2	The number of spatial data services for which metadata exist
● DSi1.3	The number of spatial data sets for which the metadata contains one or more keywords from a register provided by the Commission indicating that the spatial data set is used for reporting under the environmental legislation
● DSi1.4	The number of spatial data sets for which the metadata contains a keyword from a register provided by the Commission indicating that the spatial data set covers regional territory
● DSi1.5	The number of spatial data sets for which the metadata contains a keyword from a register provided by the Commission indicating that the spatial data set covers national territory



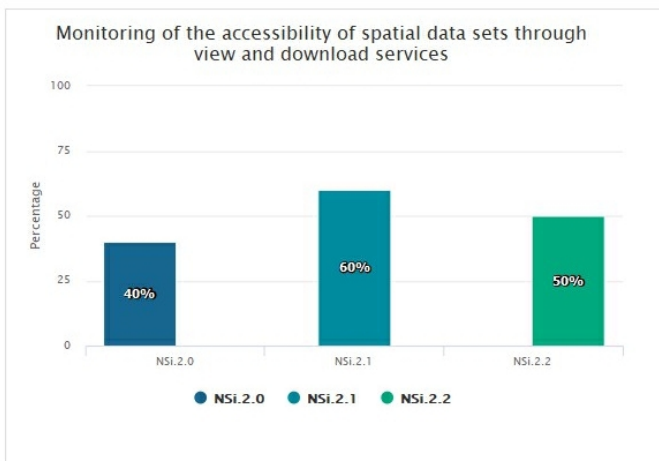
Legend

Indicator	Definition
● MDi1.1	Percentage of metadata for spatial data sets conformant with Commission Regulation (EC) No 1205/2008 as regards metadata
● MDi1.2	Percentage of metadata for spatial data services conformant with Commission Regulation (EC) No 1205/2008 as regards metadata



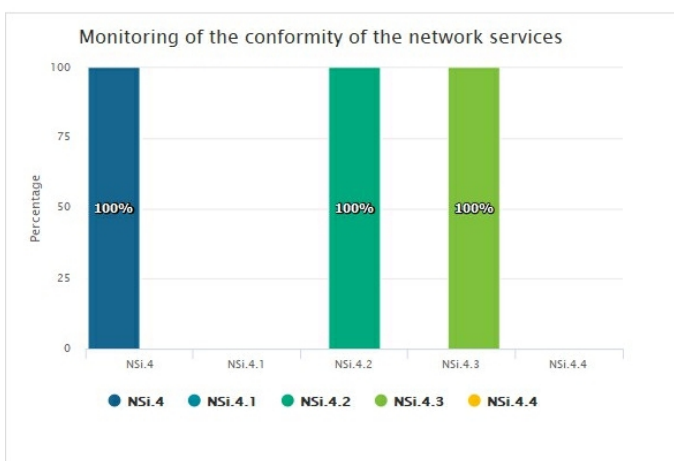
Legend

Indicator	Definition
● DSI2	Percentage of spatial data sets that are in conformity with Commission Regulation (EU) No 1089/2010 as regards interoperability of spatial data sets
● DSI2.1	Percentage of spatial data sets, corresponding to the themes listed in Annex I, that are in conformity with Commission Regulation (EU) No 1089/2010 as regards interoperability of spatial data sets
● DSI2.2	Percentage of spatial data sets, corresponding to the themes listed in Annex II, that are in conformity with Commission Regulation (EU) No 1089/2010 as regards interoperability of spatial data sets
● DSI2.3	Percentage of spatial data sets, corresponding to the themes listed in Annex III, that are in conformity with Commission Regulation (EU) No 1089/2010 as regards interoperability of spatial data sets



Legend

Indicator	Definition
● NSi.2.0	The Percentage of spatial data sets that are accessible through view and the download services
● NSi.2.1	The Percentage of spatial data sets that are accessible through view services
● NSi.2.2	The Percentage of spatial data sets that are accessible through download services



Legend

Indicator	Definition
● NSi.4	Percentage of the network services that are in conformity with Commission Regulation (EC) No 976/2009 as regards the Network Services
● NSi.4.1	Percentage of the discovery services that are in conformity with Commission Regulation (EC) No 976/2009 as regards the Network Services
● NSi.4.2	Percentage of the view services that are in conformity with Commission Regulation (EC) No 976/2009 as regards the Network Services
● NSi.4.3	Percentage of the download services that are in conformity with Commission Regulation (EC) No 976/2009 as regards the Network Services
● NSi.4.4	Percentage of the transformation services that are in conformity with Commission Regulation (EC) No 976/2009 as regards the Network Services

